



Beaver Valley Artists

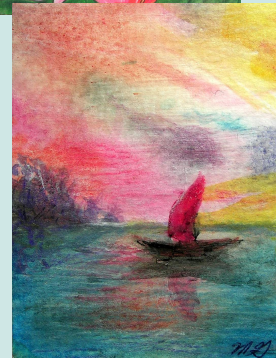
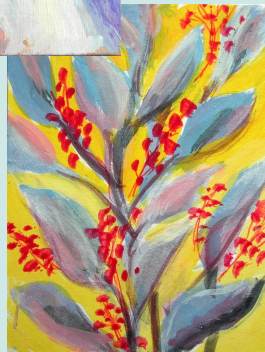
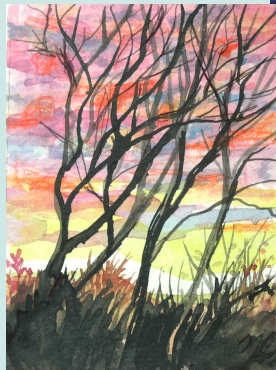
Newsletter February 2019

Next meeting:
February 14, 7:00 PM, Merrick Art Gallery
Group Critique and Artist Trading Card Exchange

We can be a resource for each other! Bring in one or two of your artworks to share with the group. Explain your **intention** for the piece, your **working method**, what you feel is **successful**, any **questions** or **struggles** you are having, or anything else you'd like to share about it. We will encourage you and offer feedback to help you make your artwork even better. Some ideas for discussion are: Mood and Emotion; Creativity; Design and Composition; Focal Point; Color and Light; Tonal Value; Shapes, Lines, and Textures; and Perspective. Even if you don't bring artwork to share, you are welcome to participate in the Critique.

Artist Trading Cards are **original** artworks that are the same size as a baseball card—2-1/2" x 3-1/2"—in either a horizontal or vertical format. When artists trade these works, they are called Artist Trading Cards (ATCs). When the works are sold, they are called ACEOs (for Art Cards, Editions, and Originals). We will have an exchange by random drawing—if you wish to participate, please bring up to three cards, and however many you bring is how many you may choose. It's a fun way to obtain original art!

Some examples of Artists Trading Cards made by our members:



Artwork by Don Nelson, Kathy Bischak, Marge Gardner, and Ruth Stone

Beaver Valley Artists News

Snacks for the February meeting will be provided by Lucinette Alvarado Frank Bisceglia Bonnie Maybray Linda Sant'Eufemia Arrive at 6:45 for snacks and conversation!

“Don’t worry about your originality. You could not get rid of it even if you wanted to. It will stick to you and show you up for better or worse in spite of all you or anyone else can do.”—Robert Henry, *The Art Spirit*

Congratulations to **Kathy Bischak** for successfully completing the *Strada Easel January 31-day Challenge!* **Every day for the entire month of January**, Kathy completed a new drawing or painting **from life** and posted it on Facebook. This is something anyone could do, with or without a contest. We could all take inspiration from Kathy and try this ourselves!



One of Kathy's paintings in process.

Colleen Tittiger will have an art show, *Splash of Color*, at the Cranberry Municipal Building from March 1 – March 31. There will be a reception for the show on Sunday, March 3, 2019, from 1:30 – 3:30 PM at 2525 Rochester Rd, Cranberry Twp, PA.

Debra and James Tobin will have artwork on display in the North Hills Art Center *Winter Hues* members' show through March. The Opening Reception and Awards Ceremony will be held 7:00 – 9:00 PM Saturday, February 2, 2019.

Cynthia Kunder, who was the Director of the **Merrick Art Gallery** for 32 years, has retired. We are grateful for Cynthia's many years of devoted service to the gallery and her support of the local arts community, and we wish her all the best in her retirement! The next time you visit the Gallery, say hello to the new Director, **Elinka Keller!**

Volunteers wanted. Danielle Hartman, Activities Director at Elmcroft Senior Living in Chippewa, is looking for artists to **share a love of art with the residents:** painting, sculpting, sewing/quilting, floral arranging, metal work, pottery or stained glass. Artist visits could be a display of completed work, a discussion and demonstration, or hands on art class. Please contact Danielle if this interests you: dhartman@elmcroft.com, Direct: 724-891-3333.

For our **March 14th meeting**, Cindy Gilberti of the Gilberti Gallery will demonstrate pastel techniques.

It's coming up!
**Beaver Valley Artists
Annual Juried Exhibition**

March 24th – April 11th, 2019
at the Merrick Art Gallery

Opening Reception:
Sunday, March 24th,
1:00 – 4:00 PM

Drop-off Dates:

**Thursday, March 14th, 6:15 – 7:00 PM and
Saturday, March 16th, 10 AM – 12 Noon**

Our juror will be Kim Freithaler, Executive
Director of the North Hills Art League.

**Juror's Critique and take down of art night:
Thursday, April 11th**

Cranberry Artists Network News

Open Studio Model Sessions will resume on February 5th, 2019. Join us the First Tuesday of each month from 6:00 – 8:00 PM at the Cranberry Municipal Building. The fee is \$10 and CAN supplies a clothed professional model, lights, snacks, and music. Bring your choice of art supplies and optional easel. You do not have to be a CAN member to participate.

The following artists' work will be featured at the Cranberry Municipal Center in February: Dee Grieb in the Back Hall Gallery and Krishna Rathod and Gadi Leshem in the Showcase.

The spring members' show, *Seeing in a New Light*, will be held from March 4 – April 15 at the Cranberry Municipal Center, with an Opening on March 7 from 6:00 – 8:00 PM.

Signing Your Artwork

This is an excellent post from The Art League blog, *Creativity in Action*, about **why and how to sign your artwork**: <https://www.theartleague.org/blog/2018/10/12/repost-how-why-to-sign-your-artwork/>

The post is brief but informative and worth checking out. There are many correct ways to sign your work and some incorrect ways. This applies to 3-dimensional work also. From the post:

Some mistakes you might make when signing your art are—

Distracting from the artwork Your signature should be small and unobtrusive. This is not the time to break out your glitter marker.

Signing illegibly The signature is there to identify you as the artist, so make sure it's legible.

Signing the mat For photographs and other prints, we sometimes see artists sign the mat. You should sign the print itself—probably not on the image, but just outside, or on the back. This way, if the piece gets reframed, the signature goes where the art goes.

Using non-archival materials Just like the artwork itself, your signature should be made to last. Don't use ink that will fade over time, for example.

The best reason to sign your work is that it gives the work value and marks it as a finished, sell-able piece of work. Please note that even if you can't sign the front of the work, the key is to have your signature or imprint somewhere on the work itself. For example, we usually sign prints in the margin, Artist Trading Cards on the back, and potters put their imprint on the bottom of the piece.

Send **Newsletter** submissions to Jennie Johnstone, jennjo@comcast.net,
724-728-1693, 892 4th Street, Beaver, PA 15009.

Send **Website** submissions to Linda Headland, headland@beavervalleyartists.org,
724-775-1787.

BVA Membership Dues—Individual: \$20, Family: \$30. Dues will be accepted starting in September, either at the meeting or by mail to Lynn Roberts, 616 8th Ave., New Brighton, PA, 15066. (Note: **from December–April, the dues are \$25**)